

Data you can Trust, Data you can Use

Institutional Research

Presented by
Xiana Santos, PhD
Institutional Researcher

01/04/2018

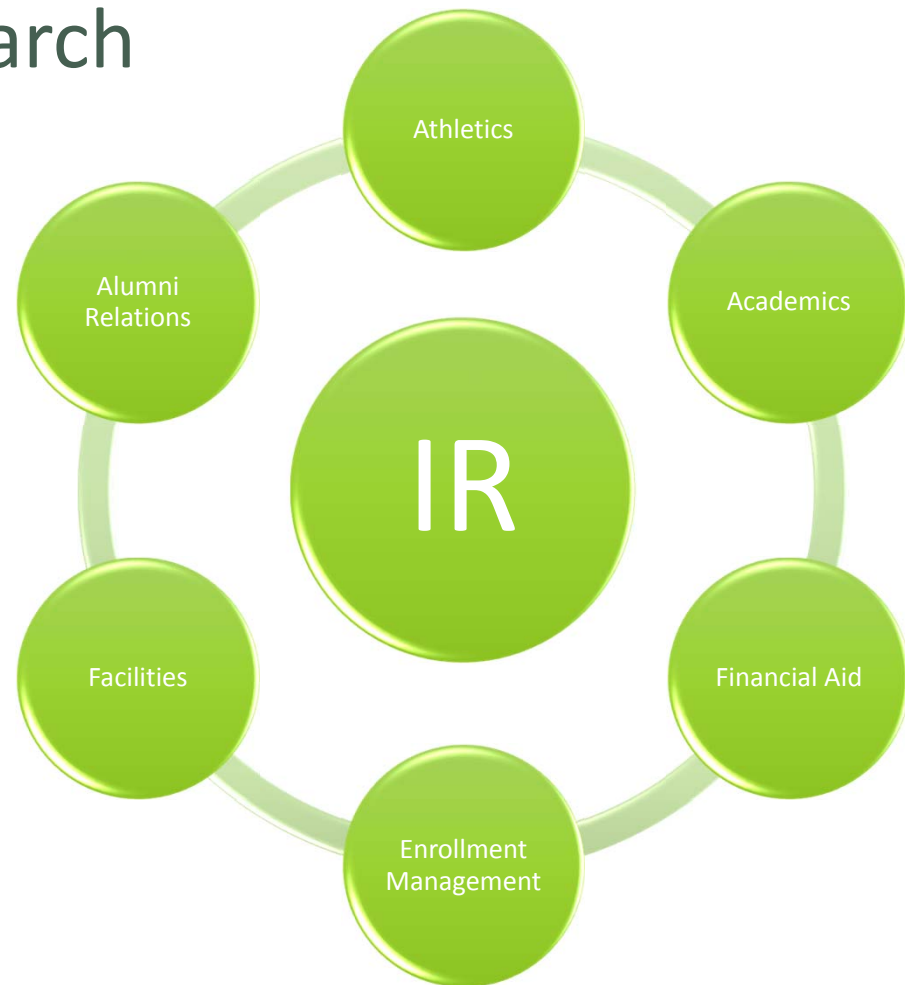
Overview

- Institutional Research's key role in Higher Education
- How everyone can play a role in Institutional Research
- Steps for us to become data informed institution

What is Institutional Research

Provides information that supports:

- institution's goals
- planning
- policy formation
- decision making



What is Institutional Research contd.

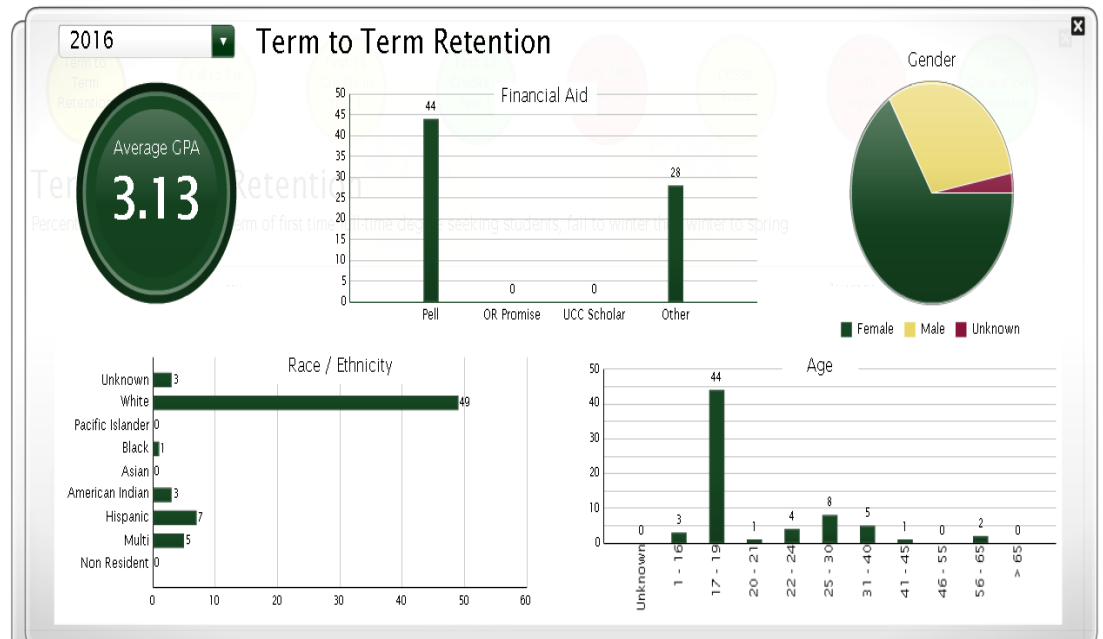
Collect, analyze, interpret, and report on

- Students
- Faculty
- Program
- Management and Operations
- Learning Outcomes



Student Access & Success Three Year Average

Last Update Date: 2/9/2017



Purpose of Institutional Research

Accountability & Reporting

- Federal Reporting
- US Dept. of Ed.
 - IPEDS

- National Initiatives
- VFA

- State Reporting
- D4A

* Required by all colleges in Higher Ed

Institutional Assessment

- Institutional Surveys
- Department and Program Level needs
- Student Satisfaction Survey
- Customer Surveys

Institutional Effectiveness

- Enrollment Management Research
- Performance Dashboard
- Strategic Planning Support

Information Management

- Fact Book
- Websites and Reports

Research Support

- Data Collection & Management
- Data Requests
- Grant Program Support and Compliance

Focus of Presentation

- Institutional Research's key role in Higher Education
- **How everyone can play a role in Institutional Research**

Federal & National Databases

- Integrated Postsecondary Education Data System (IPEDS)

<https://nces.ed.gov/ipeds/>

<https://www.umpqua.edu/ipeds-data>

- Fast Facts

<https://www.umpqua.edu/about/facts-visitor-information/fast-facts>

- US Census Bureau

<https://www.census.gov/>

- US Department of Education

<https://www.ed.gov/>



State-wide Databases

- D4A- Data for Analysis (Higher Education Coordinating Commission)
[Oregon Community Colleges Data Mart](https://www.umpqua.edu/d4a-state-reporting)
<https://www.umpqua.edu/d4a-state-reporting>
- Portland State University Census Population Research Center
[Portland State University Population Research Center](#)
- Oregon Community Colleges and Four Year Institutions
<https://www.umpqua.edu/ir-external-resources>



<http://www.androidguys.com/2007/12/08/android-users-love-data/>

Types of Data Currently Tracked at UCC

- Full Time Equivalency (FTE)
- Enrollment
- Student Retention Rates
- Student Persistence Rates
- Graduation Rates
- Campus Crime Statistics
- Gender and Ethnicity
- Academic Probation, Suspension, and Warning
- Financial Aid

<http://bi.umpqua.edu/BOE/OpenDocument/1512171312/OpenDocument/opendoc/openDocument.faces?logonSuccessful=true&shareId=0>

<https://www.umpqua.edu/ucc-annual-reports>

Different Types of Help Tickets

Help Desk Request:

<https://helpdesk.umpqua.edu/WorkOrder.do?reqTemplate=1>

Instructions:

<http://umpqua.edu/images/resources-services/it-innovation/downloads/submit-a-help-desk-ticket.pdf>

IR Request:

<https://helpdesk.umpqua.edu/WorkOrder.do?reqTemplate=1902>

Instructions:

http://umpqua.edu/images/about-ucc/offices-administration/institutional-research/downloads/IR_DATA_REQUEST_INSTRUCTION/New_HelpDesk_Login_IR_ServiceRequest_how_to.pdf

UCC Campus Catering Request:

<https://helpdesk.umpqua.edu/WorkOrder.do?reqTemplate=1602>

Instructions:

<http://umpqua.edu/images/resources-services/it-innovation/downloads/submit-a-help-desk-ticket.pdf>



AREAS OF STUDY

GETTING STARTED

COST & AID

CAMPUS LIFE

RESOURCES & SERVICES

INSTITUTIONAL RESEARCH

Institutional Research supports compliance with accreditation, federal, and state reporting requirements. Additionally, the office supports grant writing and grant compliance, and provides data and analysis for decision making processes, planning, and for college information. Institutional Research also provides data and analysis in support of compliance with strategic goals and objectives of the college.

[IR Data Request](#)

↓ View / download instructions to [Submit an IR Help Desk Ticket](#). **New!**

For general information on the college visit the [Fast Facts](#) page.

CONTACT

Xiana Smithhart, PhD – [Contact](#)

Institutional Research
Phone: 541-440-4625



<https://www.umpqua.edu/institutional-research>

INSTITUTIONAL RESEARCH

[INSTITUTIONAL RESEARCH](#)

[MASTER PLAN](#)

[STRATEGIC PLAN](#)

[IPEDS DATA](#)

[ECONOMIC IMPACT STUDY](#)

[D4A STATE REPORTING](#)

[INSTITUTIONAL RESEARCH REPORTING GLOSSARY](#)

[UCC ANNUAL REPORTS](#)

[EXTERNAL RESOURCES](#)

IR Data Request Form

helpdesk.umpqua.edu/WorkOrder.do?reqTemplate=1902

Umpqua Community College

Home Dashboard Requests Solutions Support

Incident Catalog Quick Actions

Search

Search in: Requests

Sub Modules: Default Search

Enter Keyword Go

Recent Items

- DeFazio Office Info Re...
- Data needed on UCC Fou...
- List of Math Classes a...
- Current FTE as reporte...
- Couple of Statistics f...
- (Highlight and replace...
- Non-Traditional Studen...
- fall term credit class...
- (Highlight and replace...
- OCCIR Meeting

New Incident

Change Template: IR Data Request Form

Requested Due Date *

Status * Open

Site Not associated to any site

IR Data Recurring Request ? * -- Select IR Data Recurring Request ? --

IR Data UsageType * -- Select IR Data UsageType --

Point in Time Requested * Highlight and replace this text with year/term code (e.g. 201540)

* Subject (Highlight and replace this text with a short two or three word description here)

Description

Please be sure your request fully describes the data and/or analysis desired, report time frame (what terms or academic years), due date and when you may be reached by phone. Please provide your phone number or extension or contact phone number. You will be contacted to review your request and to resolve any clarifying questions.

Requester Details

Name

Contact number

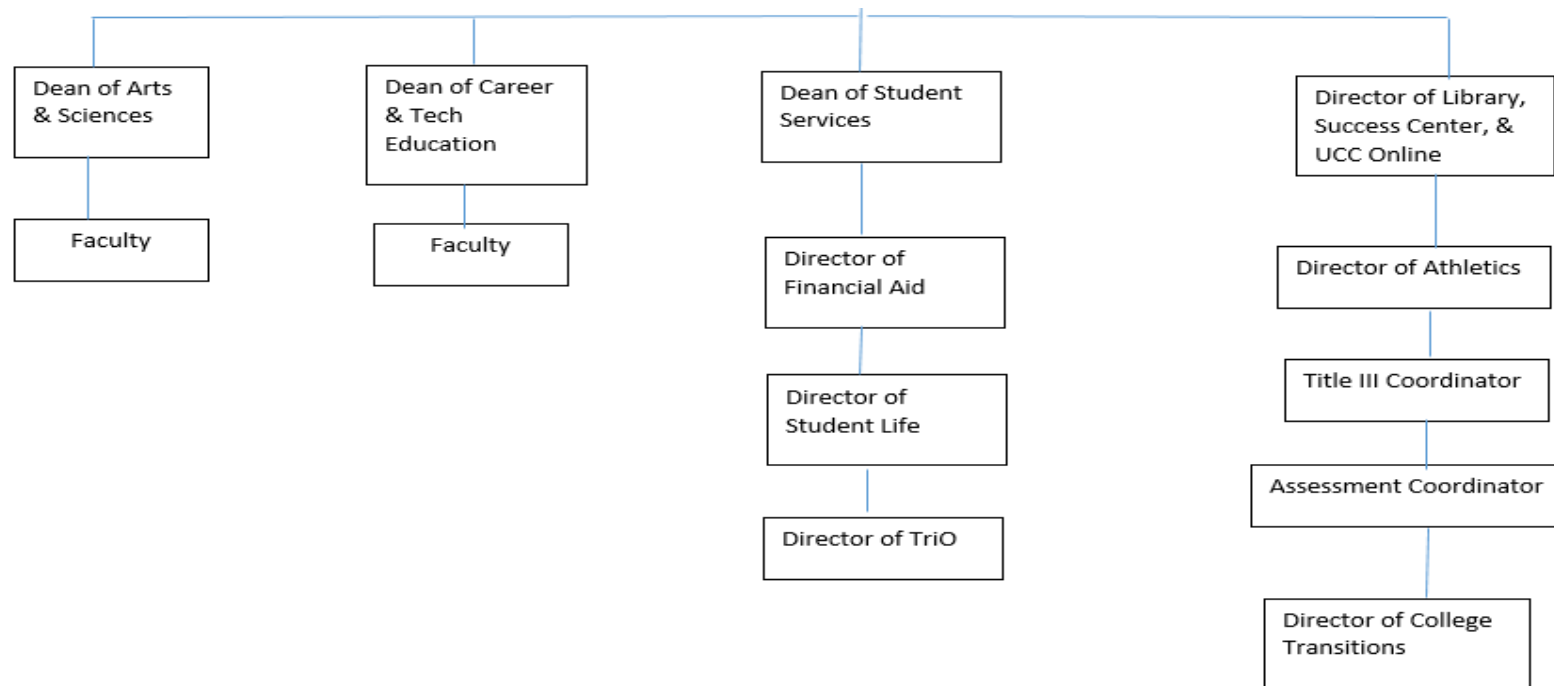
Job Title

Asset No Asset Available

Department

Attachments:

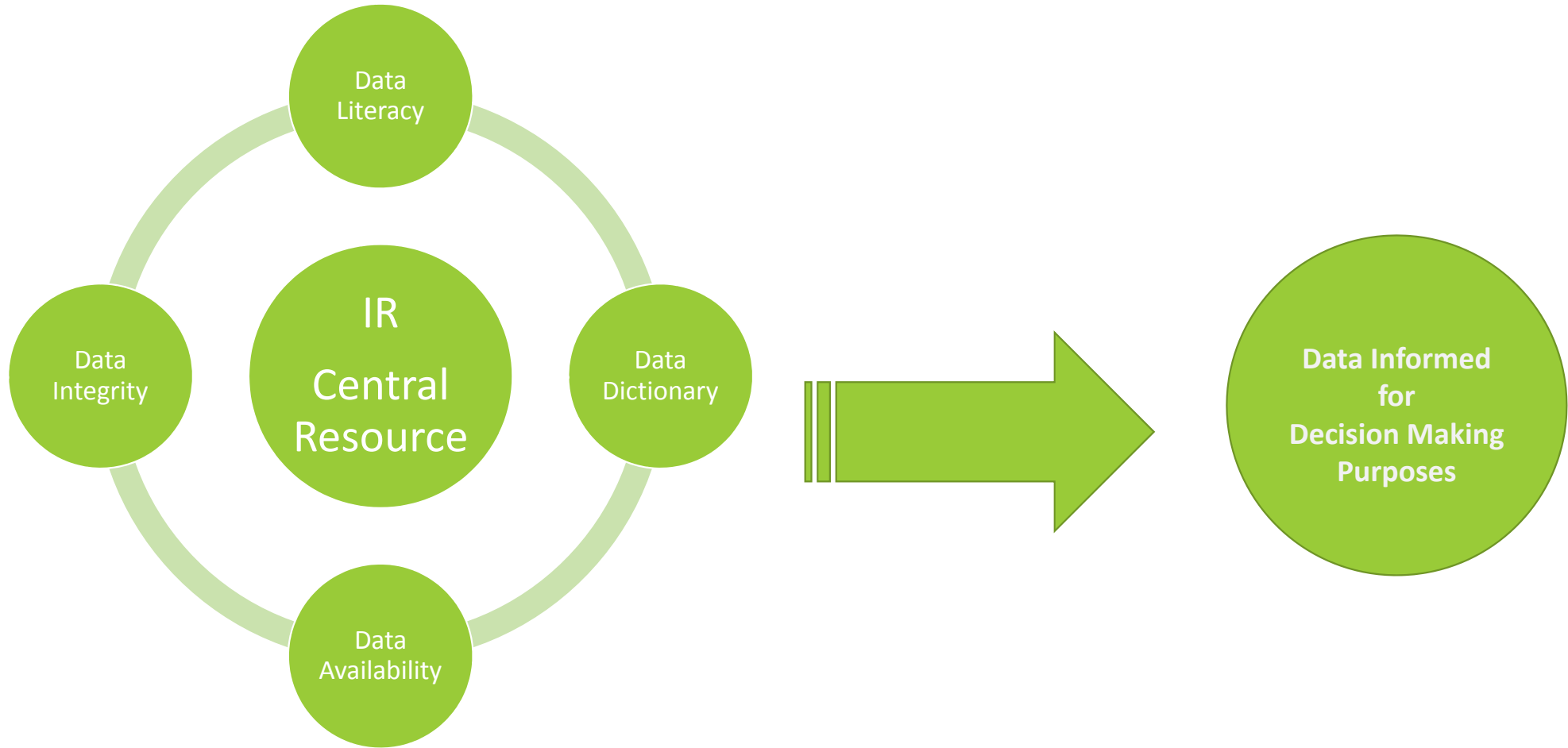
Who Submits Help Desk Ticket to IR



Focus of Presentation

- Institutional Research's key role in Higher Education
- How everyone can play a role in Institutional Research
- **Steps for us to be become data informed institution**

Data Driven and Informed College



Data Owners at UCC

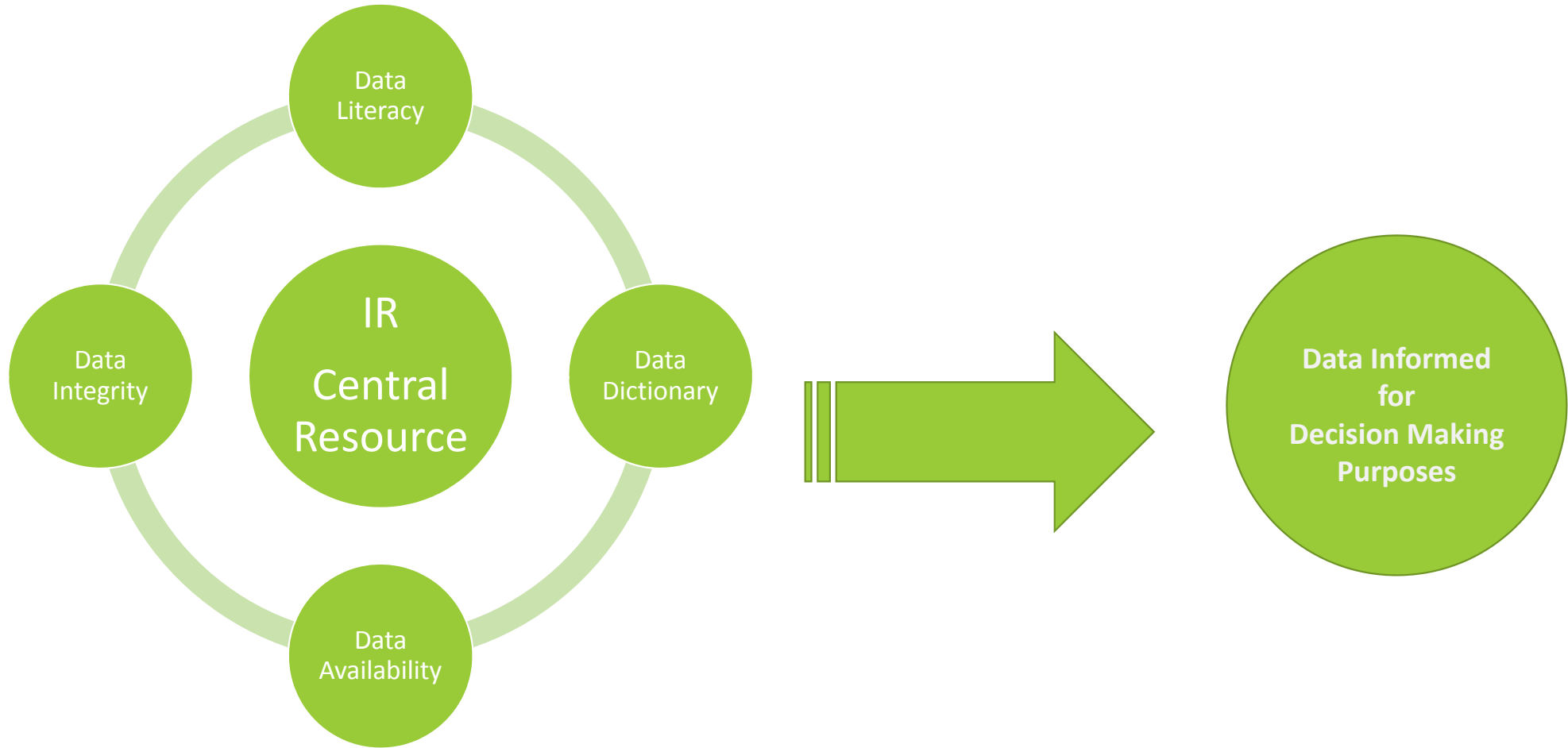
Banner Data Owners

Department	Owner
Admissions & Registration	Brenna Hobbs
Human Resources & Payroll	Lynn Johnson
Finance	Natalya Brown
Financial Aid	Michelle Bergmann
Accessibility	Danielle Haskett

Data Owners for Systems Other than Banner

System	Owner
Academic Works	Susan Taylor
Campus Crime Statistics	Jess Miller & Kelly Rigsby
25 Live	Jeanine Clute
Book Log	Micque Shoemaker
Canvas	Carol McGheon
Tutor Trac	Carol McGheon
SAGE (Early Alert) & Advisor Trac	Advising/April Hamlin
Degree Works	Brenna Hobbs
Childcare	Elisa Sensabaugh

Data Driven and Data Informed College



10 Known Words in UCC Data Dictionary

<https://www.umpqua.edu/institutional-research-reporting-glossary#F>

major code

program code

reimbursable fte

duplicated headcount

cohort

non-reimbursable fte

dictionary

dual credit

state activity code

unduplicated headcount

FTE

Questions



<https://www.eyes-down.net/blog/article/how-to-write-a-website-brief/>